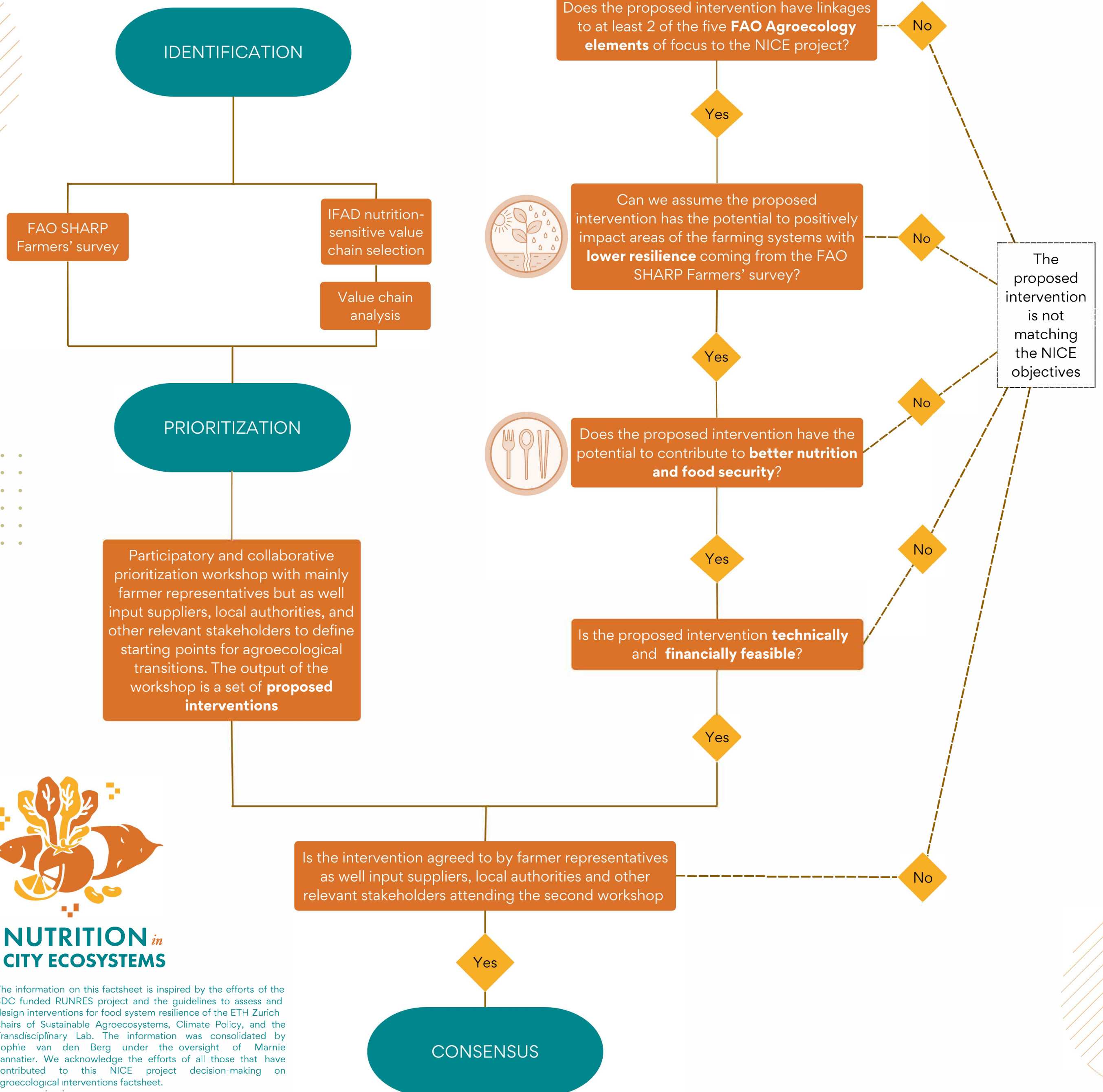


NICE project decision-making on AGROECOLOGICAL INTERVENTIONS



The information on this factsheet is inspired by the efforts of the SDC funded RUNRES project and the guidelines to assess and design interventions for food system resilience of the ETH Zurich chairs of Sustainable Agroecosystems, Climate Policy, and the Transdisciplinary Lab. The information was consolidated by Sophie van den Berg under the oversight of Marnie Pannatier. We acknowledge the efforts of all those that have contributed to this NICE project decision-making on agroecological interventions factsheet.